

Setting up an Apple Time Capsule with a BT Home Hub

Introduction

This is a brief description of how I setup my Apple Time Capsule with a BT Home Hub. I cannot claim that this is a definitive guide as I am not an Apple "Genius". However I do hope that it may prove to be reasonably useful to others.

I have to state here that I did not make very good notes when I first encountered these issues, so unfortunately this document is not quite as complete I would like it to have been.

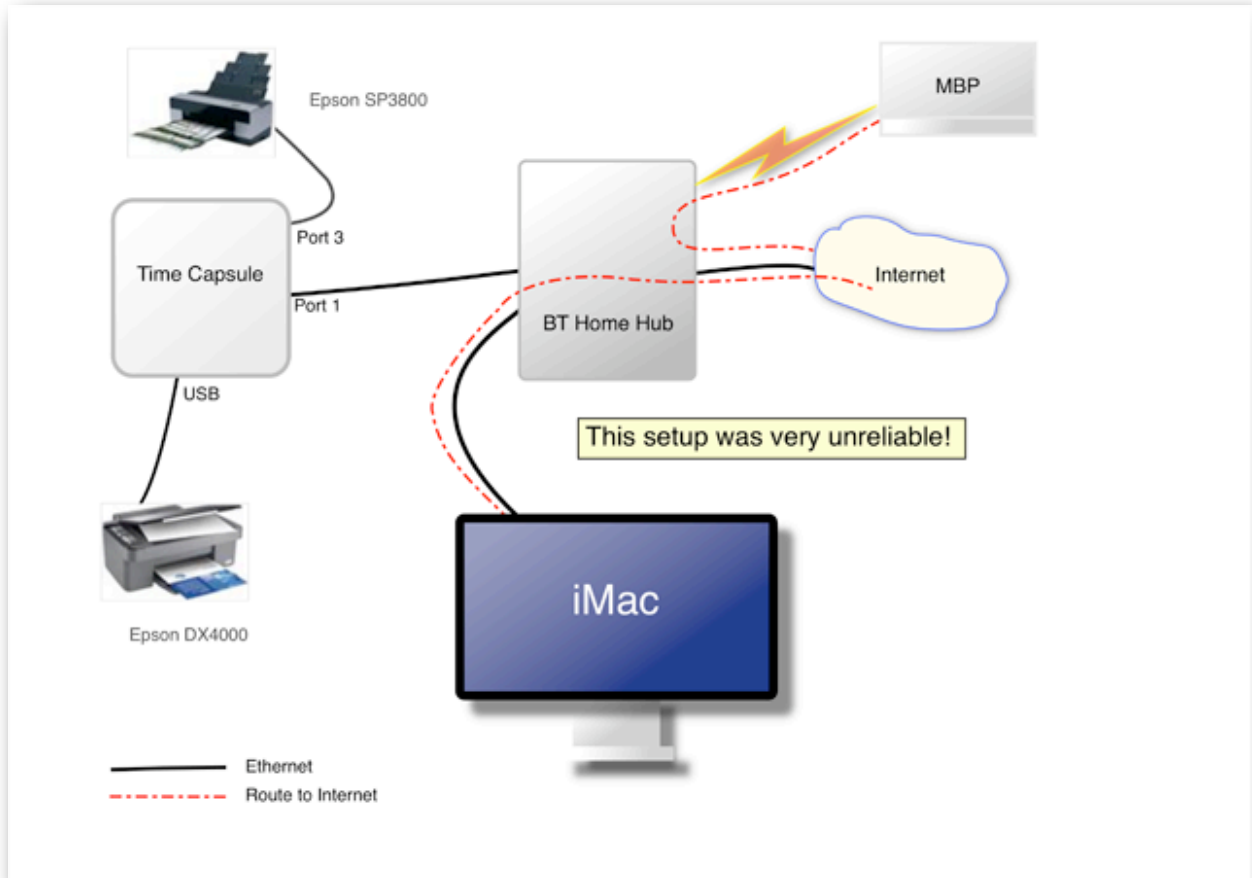
Of course I cannot be responsible for any damage to your hardware or your data. Use this information at your own risk.

Mark
© March 2008

First configuration

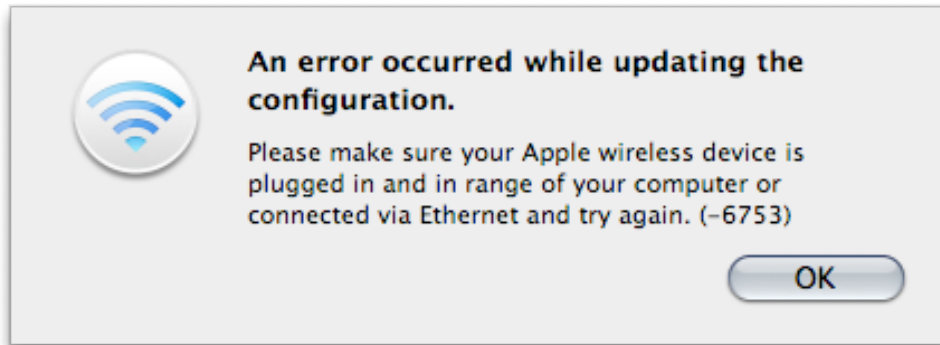
When I first attempted to setup my [Time Capsule](#) (TC) I connected according to the diagram below.

The AirPort interface in my iMac was turned off at this stage.



Setting up an Apple Time Capsule with a BT Home Hub

While I could get the AirPort Utility (APU) to locate and connect to the TC whenever I tried to save changes APU would report a 6753 error. See below:



The amber LED would flash and the TC would never become ready - i.e. with a solid green LED.

I cannot remember the exact changes I was making at this stage. I do remember trying to change the name of the TC and almost certainly turn off the wireless interface. I wanted to make sure my first Time Machine backup was via a Ethernet connection.

Getting frustrated I posted a question on [Apple's Support Discussion](#) pages. These are no longer monitored by Apple staff but there are plenty of bright people there to help out.

Very quickly got a very helpful reply (many thanks to AJH). I followed his instructions and got the TC working.

- ▶ Disconnected the Ethernet cable between my iMac and my BT Home Hub.
- ▶ Turned on WiFi on the iMac and connected back to the Home Hub WiFi network.
- ▶ Reset the TC to its factory settings by pressing the reset button on the back for five-seconds.
- ▶ Started APU on my iMac.
- ▶ When the APU runs it detects the TC and makes you 'switch networks' to the TC AirPort network.
- ▶ The TC could not auto detect the Home Hub WiFi network and hence I had to enter the settings manually.

So at this stage both my iMac and my TC were connected wirelessly to my HH.

After running through the APU setup wizard I had a working TC. I could backup my iMac, using Time Machine (TM) over a wireless network.

I then used APU again to turn off the AirPort interface in the TC. Next I connected my iMac, TC and HH according to the diagram above. As my iMac, HH and TC sit next to each other on my desk it seemed rather pointless to use WiFi when Ethernet connections should work and be faster.

Setting up an Apple Time Capsule with a BT Home Hub

While this appeared at first to work the throughput was very slow. Also the TC would repeatedly “drop out” and the amber LED would flash. The iMac would then lose the connection to the TC and the TM backup would then abort.

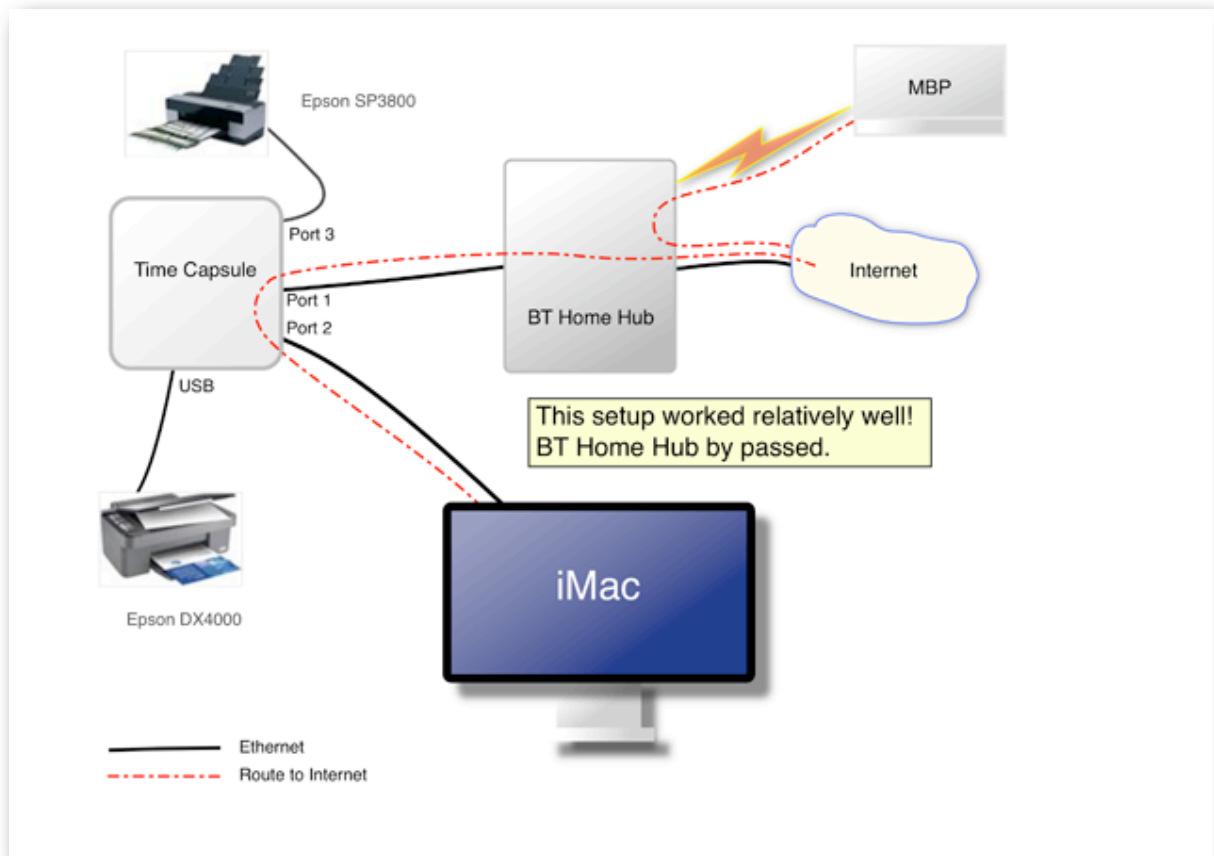
My instinctual feeling is that the “operating system” in the HH is rather slow and cannot cope with the very high throughput of the iMac/TC combination.

At this stage I nearly put the TC back its box and sent it back to Apple.

Second configuration

So while I could my make my first configuration work, although unreliably, it was not really what I wanted. I wanted the TC connected to the iMac via Ethernet and the TC also connected to the HH via Ethernet.

So after a few more experiments I got the configuration below working:



A subtle change but this is more like Apple expects the TC to be connected.

- ▶ The Air Port interface in the iMac was turned off.
- ▶ The TC is connected to the HH via the WAN port (port 1).
- ▶ The iMac is connected to a LAN port on the TC (port 2).

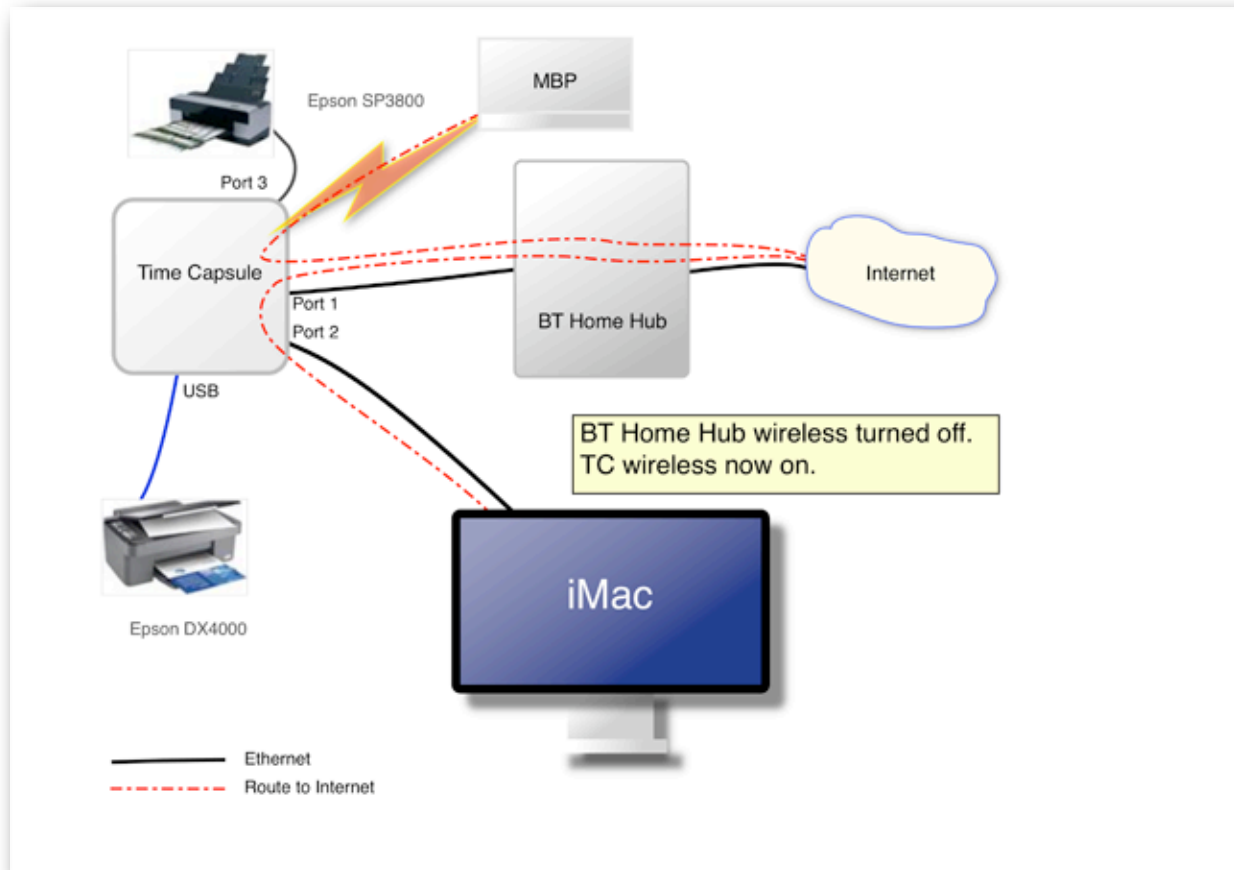
This worked well and I could now backup my iMac at rate of more than 25Gb per hour.

Setting up an Apple Time Capsule with a BT Home Hub

Third configuration

I was beginning to understand how the system worked by now. I now wanted to make use of the wireless networking capabilities of the TC.

So I reconfigured the system again:



To do this I simply turned off the WiFi interface in the HH. I then used APU to enable the AirPort interface in the TC.

Before backing up my Macbook Pro (MBP) I connected it directly to the TC via Ethernet. I then performed the first TM backup. The backup was a lot slower than the iMac, but I suspect this is due to the slower hard drive in the MBP.

Conclusions and remaining issues

The only remaining issue is the question of reliability of the TC its self. Occasionally the TC will go off-line (flashing amber LED). If I start APU at this time it reports that the TC maybe overheating. My system is located in a fairly cold room and the TC should have plenty of space around it to cool it down. The TC comes back to life in around 30 seconds or so. However this device is not exactly "server grade".

Setting up an Apple Time Capsule with a BT Home Hub

I have to ask myself if my setup issues were not self inflicted and if I just be following the Apple instructions everything would have worked first time? This maybe true however I certainly could not make the iMac to backup reliably when the HH was between the iMac and the TC.

I am beginning to have some faith in the TC and its partnership TM. Time will tell. Incidentally I will continue to make regular back ups of my iMac and MBP, using [SuperDuper](#) and store those backups away from my house.

Created with [Apple iWork](#) Pages 2008

Diagrams by [Vector Designer](#)